

ENSURES A PHASED
RELEASE OF ENERGY
AND BOOSTED BLOOD
GLUCOSE LEVELS

OUR PRODUCT
QUALITY IS
INDEPENDENTLY
ASSURED



Agri-Lloyd International Ltd.
Glendower Road,
Leominster, Herefordshire,
HR6 0RL, United Kingdom

Telephone: 01568 610111
Fax: 01568 610666
Email: office@agrillloyd.com

Agri-Lloyd Ireland Ltd.
Unit 1, Millennium
Business Park, Finglas,
Dublin 11, Ireland

Telephone: 01 864 9011
Fax: 01 864 9019
Email: officeireland@agrillloyd.com

 **Agri • Lloyd**
THE SECRET'S IN THE SCIENCE®

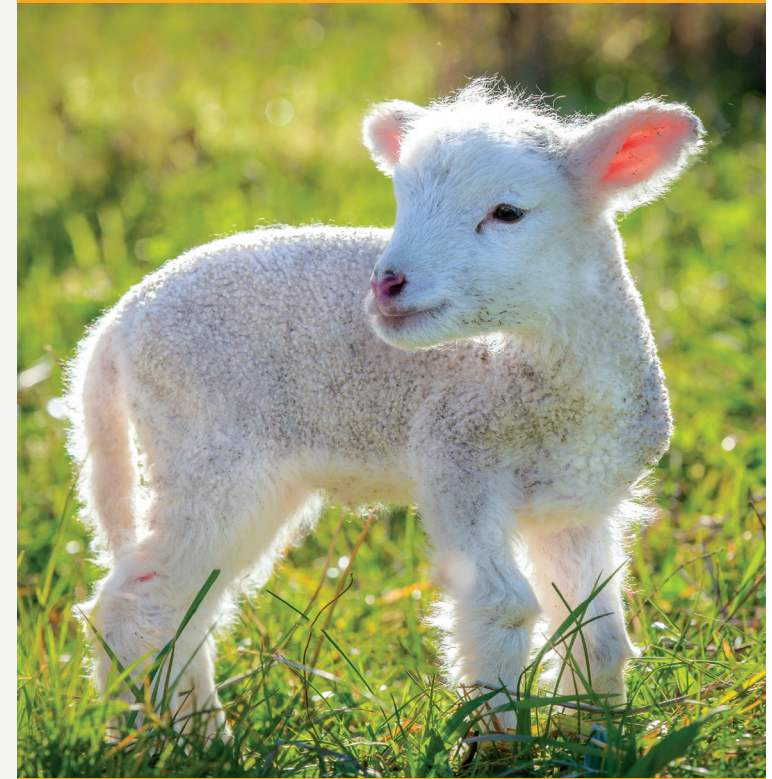
92725.3

SHEEP PRODUCTS



COLITOX®

FOUR ENERGY SOURCES IN ONE WITH CHELATED
TRACE ELEMENTS, VITAMINS AND A PROBIOTIC



 **Agri • Lloyd**

COLITOX®

FOUR ENERGY SOURCES IN ONE PRODUCT



Colitox® is an energy supplement for lambs containing four energy sources to provide 24 hours of readily available energy for new born lambs.

Many thrift related issues for new born lambs arise from feeding in unhygienic environments.

Colitox® contains a pro-biotic *Enterococcus faecium*, which has an anti-pathogen activity to help combat destructive organisms.

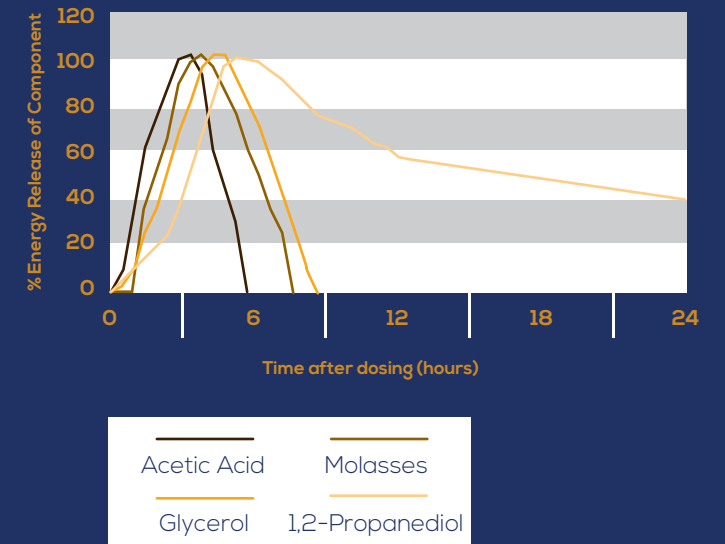
The addition of trace elements, vitamins and amino acids provides the support lambs need to get the best start in life.



THE SCIENCE BEHIND FOUR DIFFERENT ENERGY SOURCES

Different energy sources are fermented at different rates in the rumen to release their energy. Feeding a supplement with four different energy sources ensures a phased release of energy and boosted blood glucose levels from 15 minutes to 24 hours after dosing.

PHASED ENERGY RELEASE OVER 24 HOURS



WATERY MOUTH

Many of the problems related to lamb health arise from the ingestion of pathogenic organisms. Watery Mouth is a common disease of neonatal lambs especially those kept indoors. Watery Mouth is most common in lambs between 6 and 48 hours old and can cause severe losses. Young lambs between 12 and 72 hours old can become dull and refuse to suckle and will deteriorate quickly with the affected lamb dying within hours.